

ring

Motion Detector
For Ring Alarm



Home security beyond the front door

Ring Video Doorbells and Cameras create a Ring of Security around your entire property.

Ring Alarm is the security system that takes your Ring of Security a step further, giving you another level of protection for your property.

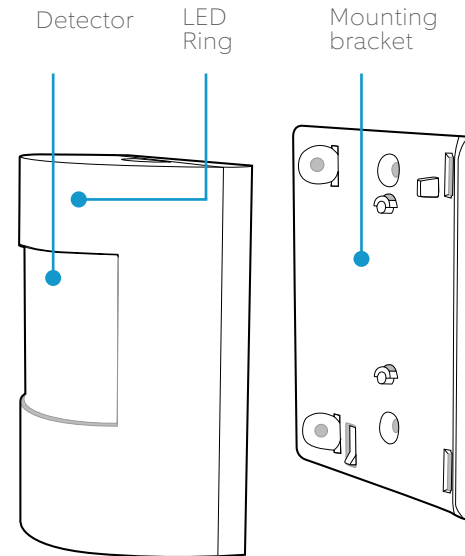
Now, you can arm and disarm your system and monitor your home, all from your phone, tablet or PC.

Contents

1. Diagram
2. In-app Setup
3. Connecting the Device
4. Physical Installation
5. Troubleshooting

1. Say hello to your Ring Motion Detector.

Diagram



2. Set up your Ring Motion Detector in the Ring app.

Set up your Ring Motion Detector near your Base Station

To add devices to your Ring Alarm, it must be disarmed. If your Ring Alarm is armed, please disarm it now.

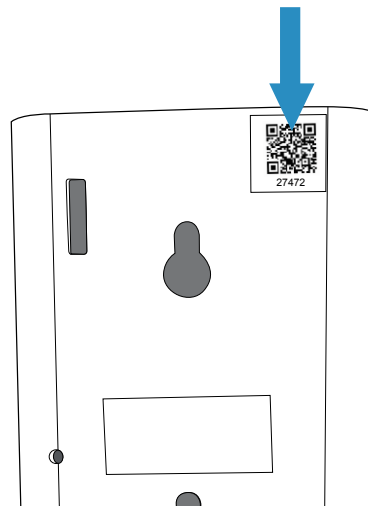
In the Ring app, tap **Set Up a Device** and find Ring Motion Detector in the **Security Devices** menu.

To complete the setup process, follow the in-app instructions.

3. Connect your Ring Motion Detector to your Base Station.

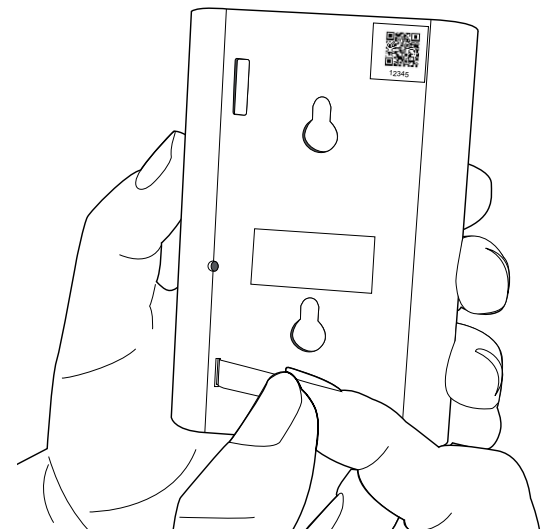
Scan the QR Code or enter the PIN

The QR Code and PIN can be found on the back of your device, on the box, or on the card in this box.



Pull the tab on the detector

This connects the battery and turns on the device. Your Base Station will find it.



Track the connection progress of the sensor

Your sensor will try to connect to your Base Station. The sensor's LED ring will show you the progress.

Connected  Blue Solid (5 sec)

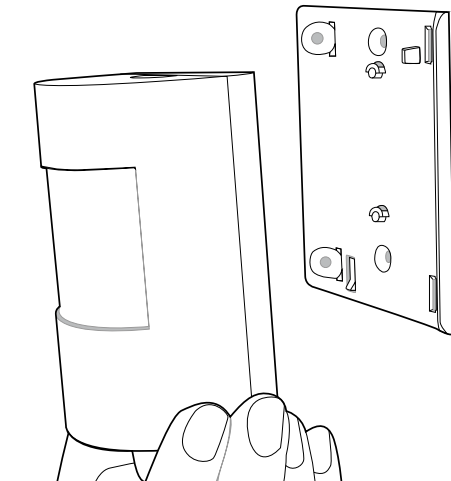
Motion detected  Blue Blink (1x)

Sensor tampered  Blue Blinks (3x)

4. Install your Ring Motion Detector on the wall.

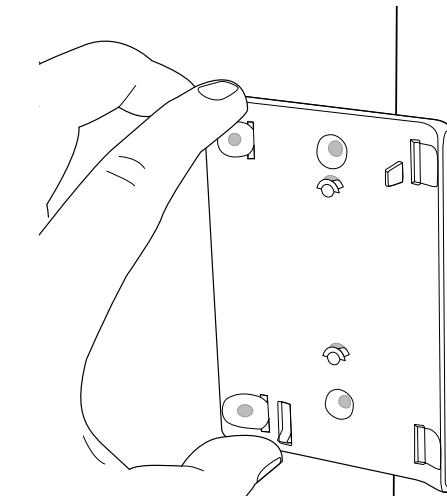
Place your detector (but don't install it yet)

Hold the detector where you want to install it. Make sure the detector detects motion in the whole area.



Install your detector.

Use the bracket and tape or screws included in your kit. The detector can be mounted flush to the wall or angled in a corner.



5. Some additional details about your detector.

How to change the battery

Your battery should last quite a long time, but when you need to replace it, press the clip and remove the detector cover.

